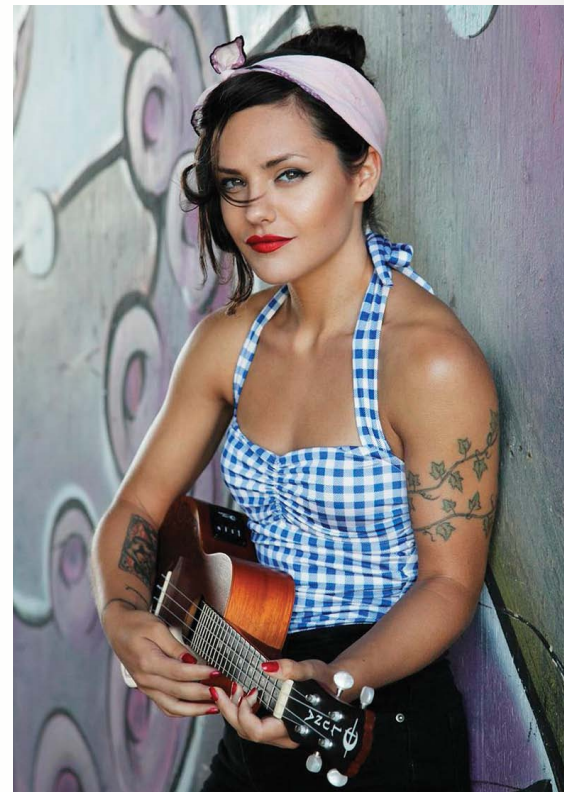


2015 collection

**LUNA**  
**GUITARS**







**ACOUSTIC GUITARS**

Vista series.....1-4  
 Artist series.....5-8  
 Heartsong series.....9-10  
 Americana series.....13  
 Woodland series.....14  
 Henna series.....13-15  
 Vicki Genfan signature guitar.....16  
 Oracle series.....17-21  
 Trinity series.....22  
 Wabi Sabi series.....23-24  
 Flora & Fauna series.....25-30  
 Nylon series.....31-32  
 Safari.....33-36  
 Gypsy series.....37-41  
**CHILDRENS INSTRUMENTS**.....42  
**UKULELES**.....43-54  
**FOLK INSTRUMENTS**.....55-58  
**ELECTRIC GUITARS**.....59-64  
**BASS GUITARS**.....65-66  
**AMPS**.....67  
**CASES**.....68

© 2015 LUNA GUITARS  
 product photography..... Sean Vennett  
 lifestyle photography ..... Aydelette Kelsey  
 layout.....Terry Trutt  
 words.....Yvonne de Villiers  
 quotes ..... Rumi

*"Be a lamp, or a lifeboat, or a ladder.  
 Help someone's soul heal."*

from Yvonne de Villiers

The power of music as a platform for social change is undeniable. As deep changes in society have occurred...in civil rights, anti-war and labor movements... music has been the 'soundtrack' for many of these changes.

Art has the power to reawaken - reveal - reform - release - recover - rekindle - renew - relieve - reaffirm and reunite. No doubt the arts are powerful stuff. And with great power comes great responsibility.

Music is a passport to a person's heart...it cuts deep into their core and subconscious. Listeners open themselves up to music in ways they may not in any other area of their lives. For musicians to deny the influence of music on people is, in essence, denying the value and power of the art they create.

One of the most popular areas of research in psychology/neurology today is neuroplasticity. Its major tenant is that intense, prolonged, or repeated mental/neural activity will leave an enduring imprint in neural structure, like a surging current reshaping a riverbed. Neurons that fire together, wire together. Mental states become neural traits. One simple truth from this science stands out: Your experiences matter. Not just for how they feel in the moment but for the lasting traces they leave in your brain.

As musicians, we are as responsible for our lyrics as we are for the words and actions in our daily life. Music literally has the power to change a life ... to change a society...to change our world. Speak your truth with love and make your music count as a positive force.

With Love & Kindness,

*Yvonne de Villiers*



tribal elder, muse, and the creative vision behind Luna Guitars



# THE VISTA SERIES

## INSPIRATION THAT TAKES YOU PLACES

Luna Guitars' new Vista Series continues a tradition of beautiful, innovative design, laden with personal meaning. This collection of four guitars evokes majestic landscapes, with open space to all sides and above - giving your creativity room to roam, explore and soar!

The Vista Bear features a lone bear in the foreground with a silhouetted tree line, mountains and setting sun as a backdrop. The bear is a totem of grounding, courage, strength and confidence. Bear also emphasizes the importance of solitude, quiet time and rest. Let your inspiration find nourishment and expression with this stunning instrument.

### VISTA SERIES BEAR

**BODY:** grand auditorium  
**TOP:** paduak, quilt maple, blackwood, spalted maple, ovangkol, koa & cocobolo  
**BACK & SIDES:** ovangkol  
**NECK:** mahogany  
**BINDING:** flame maple  
**FRETBOARD / BRIDGE:** ebony  
**PREAMP/TUNER:** B-Band T55  
**SCALE:** 25 1/2"  
**NUT SIZE:** 1 5/8"  
**FINISH:** gloss  
**CASE:** faux tooled leather hard shell (included)

### VISTA BEAR



**NEW!**

*"Wherever you stand, be the soul of that place"*

Your audience will find their imaginations sparked by the composition of vibrant colors and textures in the specially-chosen, exotic wood veneers of each model. Best of all, the natural variations in these woods' grain and color will make every Vista guitar unique among its fellows... mirroring the individual ways that we each perceive the vistas in our own lives.

The Mustang depicts wild horses galloping freely across a moonlit desert plain. Mustangs are a mythic symbol of freedom, heroism, romance, limitless possibilities, and the vanishing West. Let your song writing run free on this inspirational Luna guitar.

### VISTA SERIES MUSTANG

**BODY:** grand auditorium  
**TOP:** rosewood, zebrawood, padauk, bird's eye maple, koa & flame maple  
**BACK & SIDES:** rosewood  
**NECK:** mahogany  
**BINDING:** maple  
**FRETBOARD / BRIDGE:** ebony  
**PREAMP/TUNER:** B-Band T55  
**SCALE:** 25 1/2"  
**NUT SIZE:** 1 5/8"  
**FINISH:** gloss  
**CASE:** faux tooled leather hard shell (included)

### VISTA MUSTANG





*"Sell your cleverness and buy bewilderment."*

This Vista model truly lives up to the Luna name – depicting a lone wolf howling under a pale, emerging moon. A desolately beautiful mountain range, in a vibrant array of wood colors and grains, frames this nocturnal scene of vast open space, freedom of movement, and creative possibility.

Depending on your individual interpretation, there's even a certain element of primal wildness. Harness the elements of this scene within your writing and musicianship, and your fans may howl their own delight!

## VISTA SERIES WOLF

**BODY:** grand auditorium  
**TOP:** blackwood, padauk, koa, flame maple, cocobolo, maple burl & movingui  
**BACK & SIDES:** cocobolo  
**NECK:** mahogany  
**BINDING:** flame maple  
**FRETBOARD / BRIDGE:** ebony  
**PREAMP/TUNER:** B-Band T55  
**SCALE:** 25 1/2"  
**NUT SIZE:** 1 5/8"  
**FINISH:** gloss  
**CASE:** faux tooled leather hard shell (included)

VISTA WOLF



*"Listen with ears of tolerance! See through the eyes of compassion! Speak with the language of love"*

## VISTA SERIES EAGLE

**BODY:** grand auditorium  
**TOP:** movingui, padauk, bubinga, koa & spalt maple  
**BACK & SIDES:** koa  
**BINDING:** mahogany  
**NECK:** mahogany  
**FRETBOARD / BRIDGE:** ebony  
**PREAMP/TUNER:** B-Band T55  
**SCALE:** 25 1/2"  
**NUT SIZE:** 1 5/8"  
**FINISH:** gloss  
**CASE:** faux tooled leather hard shell (included)

VISTA EAGLE

Who among us has never dreamed of soaring high and free above the world upon which we're bound? The Vista Eagle lets your imagination take wing against a blazing sky, high above a variegated plain.

This sunlit entry in the Vista series is open to interpretation, beyond whether you see its marvelous golden sky as sunrise or sunset. It can evoke the delight of unhurried motion, rising upon warm updrafts – or the bracing urgency of frigid, stiff wind during necessary flight. Whether you're practicing, writing songs, or performing, this guitar will lend a sense of wonder and elevate your creative perspective.





CRAFTSMAN

**ARTIST SERIES  
CRAFTSMAN**

**BODY:** grand auditorium  
**TOP:** solid cedar  
**BACK & SIDES:** solid koa  
**NECK:** one piece mahogany  
**FRETBOARD/BRIDGE/BINDING:** rosewood  
**ROSETTE:** rosewood  
**INLAY:** mother of pearl  
**NUT/SADDLE:** black NuBone  
**PREAMP/TUNER:** B-Band T55  
**SCALE:** 25 1/2"  
**NUT SIZE:** 1 11/16"  
**FINISH:** gloss top/ satin back & sides

**ART CRAFTSMAN**

*"Forget safety. Live where you fear to live. Destroy your reputation. Be notorious."*

The Arts and Crafts movement flourished between 1860-1910 and started as a reaction against the styles developed by machine production. Objects were simple in form, without superfluous decoration - and they tended to emphasize the qualities of the materials used ("truth to material"). Their patterns were greatly inspired by flora and fauna.

Luna's Craftsman guitar has many of the same characteristics as its namesake movement. Its simple rosette and fret markers were inspired by a classic 'rose' design made famous by Dard Hunter, one of the most well-respected designers of the era. It is crafted of solid spruce, ebony, mahogany and koa - with mother-of-pearl inlay - for excellence in both form and tonal quality.





NOUVEAU

*"Don't be satisfied with stories, how things have gone with others.  
Unfold your own myth."*

### ARTIST SERIES NOUVEAU

Players asked, and Luna listened. We are delighted to present the Artist Series... beautifully appointed instruments featuring a solid back, ebony headstock, rosewood fingerboard, bridge and binding, as well as B-Band's T55 preamp system. The simple and elegant designs for these instruments were inspired by three international design movements — Art Nouveau, Arts & Crafts, and Art Deco.

Luna's Craftsman guitar has many of the same characteristics as its namesake movement. Its simple rosette and fret markers were inspired by a classic 'rose' design made famous by Dard Hunter, one of the most well-respected designers of the era. It is crafted of solid spruce, ebony, mahogany and koa - with mother-of-pearl inlay - for excellence in both form and tonal quality.

**BODY:** grand auditorium  
**TOP:** solid cedar  
**BACK & SIDES:** solid rosewood  
**NECK:** one piece mahogany  
**FRETBOARD/BRIDGE/BINDING:** rosewood  
**ROSETTE:** rosewood  
**INLAY:** mother of pearl  
**NUT/SADDLE:** black NuBone  
**PREAMP/TUNER:** B-Band T55  
**SCALE:** 25 1/2"  
**NUT SIZE:** 1 11/16"  
**FINISH:** gloss top/ satin back & sides

ART NOUVEAU



DECO

*"When you do things from your soul, you feel a river  
moving in you, a joy."*

### ARTIST SERIES DECO

Art Deco is an eclectic artistic & design style that began in Paris in the 1920s, and flourished internationally. It represented elegance, glamour, functionality & modernity. Its linear symmetry was a distinct departure from the flowing, asymmetrical, organic curves of its predecessor, Art Nouveau.

Luna's Art Deco guitar has a clean, crisp design that perfectly reflects the Deco movement. The mother-of-pearl inlay, stunning against rosewood, is a perfect example of Deco minimalism. These instruments merge elegance and functionality that add up to a truly exceptional instrument.

**BODY:** grand auditorium  
**TOP:** solid spruce (steel string)  
 solid cedar (nylon string)  
**BACK & SIDES:** solid mahogany (steel string)  
 solid rosewood (nylon string)  
**NECK:** one piece mahogany  
**FRETBOARD/BRIDGE/BINDING:** rosewood  
**ROSETTE:** rosewood  
**INLAY:** mother of pearl  
**NUT/SADDLE:** black NuBone  
**PREAMP/TUNER:** B-Band T55  
**SCALE:** 25 1/2"  
**NUT SIZE:** 1 11/16"  
**FINISH:** gloss top/ satin back & sides

ART DECO ART DECO NYL



DECO NYLON  
 Also available  
 in a nylon  
 string version





PARLOR



FOLK NYLON



GRAND CONCERT TWELVE

GRAND CONCERT

*"If you are irritated by every rub, how will your mirror be polished?"*

## HEARTSONG SERIES HEARTSONG

The HeartSong Series is another Luna innovation, sparked by asking players what would facilitate their creative process. What we heard is that flashes of creativity do not always happen at opportune times – and inspiration is sometimes lost. Luna got to work with B-Band to develop a “plug and play” system with a USB output that allows a player to capture their creativity on the fly.

These ingenious instruments are available as parlor, grand concert, 12-string grand concert, or folk nylon versions – all featuring a distinctive treble/bass clef inlaid mahogany and lacewood rosette, and a pearloid fingerboard design inspired by musical notation.

And for you Vegans out there that have been requesting a guitar without mother of pearl or abalone, we can recommend this guitar as having no animal by-products.

**BODY:** grand concert, folk, parlor  
**TOP:** select spruce  
**BACK & SIDES:** mahogany  
**NECK:** mahogany  
**FRETBOARD:** rosewood  
**PREAMP/TUNER:** B-Band T35  
**OUTPUT:** 1/4" + separate USB output  
**SCALE:** 25 1/2"  
**NUT SIZE:** 1 11/16" NuBone  
**FINISH:** satin

**SONG GC**  
**SONG PAR**  
**SONG NYLON**  
**SONG 12**





AMT 100

AME 100

AMD 100

AMP 100

*"Stop acting so small. You are the universe in ecstatic motion."*

AMERICANA SERIES

AMD SERIES GUITARS

The Americana Collection has a classic, traditional look... and designs drawn from our unique cultural heritage.

The **AME 100** features the bald eagle...the only eagle unique to North America, and the emblem of the United States since 1782 because of "its long life, great strength, and majestic looks." This guitar is as visually sleek and sonically powerful as its inspiration.

The **AMT 100**'s etched pick guard design suggests the feel of tooled leather, and the herringbone binding suggests stitching - both evocative of the American West.

For the purists who want a strictly traditional look, the **AMD 100** offers a B-Band® preamp in a cut-away dreadnaught profile... with the **AMP 100** in a parlor profile.

**BODY:** dreadnaught, parlor  
**TOP:** solid spruce  
**BACK & SIDES:** mahogany (AMT, AMD, AMP 100) rosewood (AME 100)  
**NECK:** mahogany  
**FRETBOARD:** ebony  
**PREAMP/TUNER:** B-Band T35  
**SCALE:** 25 1/2"  
**NUT SIZE:** 1 11/16"  
**FINISH:** clear gloss  
**BINDING:** herringbone

**AMT 100**  
**AME 100**  
**AMD 100**  
**AMP 100**



NOX

SPALTED MAPLE

BUBINGA

QUILTED ASH 12

*"What you seek is seeking you."*

WOODLAND SERIES

Luna's Woodland Series marry the simple styling of Luna's Crescent sound hole rosette with striking exotic tops, back and sides. Like fingerprints, no two of these guitars' stunning organic wood grains are exactly alike.

Take your pick of warm Spalted Maple, or gorgeous Bubinga. (Quilted Ash also available as a 12-string version)

NOX

**BODY:** grand concert  
**TOP:** solid spruce  
**BACK & SIDES:** mahogany  
**NECK:** mahogany  
**BINDING:** mahogany  
**FRETBOARD/BRIDGE:** ebony  
**PREAMP/TUNER:** B-Band T55  
**SCALE:** 25 1/2"  
**NUT:** 1 5/8"  
**FINISH:** Black Gloss

FAU NOX

SPALTED MAPLE BUBINGA

**BODY:** grand concert  
**TOP:** spalted maple  
**BACK & SIDES:** spalted maple  
**NECK:** mahogany  
**BINDING:** multi-ply  
**FRETBOARD/BRIDGE:** rosewood  
**PREAMP/TUNER:** B-Band T35  
**SCALE:** 25 1/2"  
**NUT:** 1 5/8"  
**FINISH:** Gloss

WL SPALT

**BODY:** grand concert  
**TOP:** bubinga  
**BACK & SIDES:** rosewood  
**NECK:** mahogany  
**BINDING:** multi-ply  
**FRETBOARD/BRIDGE:** rosewood  
**PREAMP/TUNER:** B-Band T35  
**SCALE:** 25 1/2"  
**NUT:** 1 5/8"  
**FINISH:** Gloss

WL BUBINGA

QUILTED ASH 12

**BODY:** grand concert  
**TOP:** quilted ash  
**BACK & SIDES:** quilted ash  
**NECK:** mahogany  
**BINDING:** multi-ply  
**FRETBOARD/BRIDGE:** rosewood  
**PREAMP/TUNER:** B-Band T35  
**SCALE:** 25 1/2"  
**NUT:** 1 13/16"  
**FINISH:** Gloss

WL ASH 12





**NEW!**

*"The wound is the place where the Light enters you."* **HENNA SERIES SAHARA**

The Henna Series incorporates our folk style cutaway body, pairing its mahogany sides and back with either a solid Cedar or solid Spruce top, for tone that is as uniquely pleasing and distinctive as the instrument's show-stopping henna artwork.

Each henna design, a custom creation of renowned UK artist Alex Morgan, is faithfully reproduced through leading-edge laser etching - in effect, tattooing the intricate design into the instrument's wood.

The Sahara guitar has a distinctive Moroccan characterized by geometric forms and straight lines with powerful symbols of protection and fertility.

- laser etch henna art by **Alex Morgan**
- BODY:** grand concert
- TOP:** solid spruce
- BACK & SIDES:** mahogany
- NECK:** mahogany
- PREAMP/TUNER:** B-Band T35
- SCALE:** 25 1/2"
- NUT SIZE:** 1 11/16"
- FINISH:** satin
- HEN SAH SPR**





PARADISE CEDAR

OASIS SPRUCE

*"Out beyond ideas of wrong  
doing and right-doing there is a  
field. I'll meet you there."*

## HENNA SERIES PARADISE, OASIS

laser etch tattoo art by Alex Morgan  
**BODY:** folk  
**TOP:** solid spruce or solid cedar  
**BACK & SIDES:** mahogany  
**NECK:** mahogany  
**PREAMP/TUNER:** B-Band T35  
**SCALE:** 25 1/2"  
**NUT SIZE:** 1 11/16"  
**FINISH:** satin

**HEN P2 SPR HEN P2 CDR**  
**HEN O2 SPR LEFTY**

### OASIS HENNA

The henna design of the Oasis Henna guitar draws its inspiration from the strange flowers and enchanted forests of Ottoman art. A wild rose, with additional blooms of tulips and violets, tumbles across the front of the instrument.

### OASIS PARADISE

Luna's Paradise guitar is based on the art of Medieval Spain. The culturally rich and diverse period is the only one in which Henna was grown and used as a cosmetic in Europe. The era also was historically important in development and growing popularity of the guitar.

*"Raise your words, not voice. It is rain that  
grows flowers, not thunder."*

Every now and then, an artist comes along whose music reaches out and touches the soul of all who hears it. Virtuoso guitarist, singer and composer Vicki Genfan is among those artists.

Using 31 alternate tunings and the percussive technique she calls 'slap-tap', Vicki has been recognized among the world's greatest guitarists.

Vicki Genfan started out playing the Muse 12-string and Luna Artist Trinity, but had longed for a Henna guitar of her dreams – with all the bells and whistles that her particular type of playing requires. To that end, Luna worked with master luthier Gray Burchette to build the ultimate Luna Guitar.

Based on Vicki's dream Luna, we are proud to offer the **Vicki Genfan Signature Acoustic**. Featuring a solid spruce top laser etched with the same "OM" design that graces her own guitar, and rosewood sides and back, this guitar delivers acoustically. When plugged in, the B-Band® preamp provides stage-worthy amplification.

## VICKI GENFAN SIGNATURE

laser etch Om artwork  
 by Alex Morgan  
**BODY:** VG Signature OM  
**TOP:** solid spruce  
**BACK & SIDES:** rosewood  
**NECK:** mahogany  
**FRETBOARD:** rosewood  
**TUNERS:** Grover  
**NUT/SADDLE:** NuBone  
**PREAMP/TUNER:** B-Band T35  
**SCALE:** 25 1/2"  
**NUT SIZE:** 1 11/16"  
**FINISH:** gloss top/ satin b&s

**VG SIG**







*"Let yourself be drawn by the stronger pull of that which you truly love."*

Following Luna's innovative tradition, The Oracle Series foresees the future of guitar architecture, and takes solid top guitar ornamentation into uncharted territory. Some Oracle designs are the same as those found in the Flora and Fauna series, for those players who prefer a solid top and natural look – while others are exclusive to the Oracle series.

**ORACLE TATTOO**

The Oracle Tattoo is inspired by traditional tattoo body ornamentation. Those designs were monochromatic - tattooed in black against brown skin, with strongly geometric patterns and shapes and symbols inspired by the natural island world. This instrument is tattooed by laser etching against a solid cedar top, offering a warm look with equally warm tones.

**ORACLE SERIES TATTOO**

Laser art by **Alex Morgan**  
**BODY:** grand concert  
**TOP:** solid cedar (Tattoo)  
 solid spruce (Peace)  
**BACK & SIDES:** mahogany  
**NECK:** mahogany  
**FRETBOARD/BRIDGE:** rosewood  
**PREAMP/TUNER:** B-Band T35  
**SCALE:** 25 1/2"  
**NUT SIZE:** 1 11/16"  
**FINISH:** clear satin

**OCL TAT CDR**





ORACLE PEACE



ORACLE ROSE

ORACLE KOI 2  
(IMPROVED ROSETTE)ORACLE PHOENIX 2  
(IMPROVED ROSETTE)

## ORACLE SERIES PEACE, ROSE

*"I want to sing like the birds sing, not worrying about who hears or what they think."*

Peace Laser art by Alex Morgan  
Rose inlaid in paduak, mahogany, dyed maple  
**BODY PEACE:** grand concert  
**BODY ROSE:** folk  
**TOP:** solid spruce  
**BACK & SIDES:** mahogany  
**NECK:** mahogany  
**FRETBOARD/BRIDGE:** rosewood  
**PREAMP/TUNER:** B-Band T35  
**SCALE:** 25 1/2"  
**NUT SIZE:** 1 11/16"  
**FINISH ROSE:** gloss top satin b&s  
**FINISH PEACE:** satin

OCL RSE  
OCL PCE

### ORACLE PEACE

*"Imagine all the people, living life in peace" - John Lennon*

The Oracle Peace is Luna's offering to remember all who have dedicated their lives to peace - and to help imagine peace through music. A laser-cut peace sign at the sound hole is surrounded by laser etched words for peace in different languages, forming a graceful continuum across the solid spruce soundboard.

### ORACLE ROSE

This Oracle's rose embraces the sound hole and trails gracefully onto the lower bout. The inlaid blossoms, a symbol of love and passion, are stunning against the solid spruce top. A remarkable instruments to give voice to your own love and passion through music.

*"Take down a musical instrument. Let the beauty we love be what we do."*

The koi's popularity in contemporary tattoo inspired Luna to offer this symbol as a companion to the Phoenix, which is also a favored subject for body art.

The intricate koi design is inlaid in mahogany against a solid spruce top with mahogany back and sides. The koi is a symbol of perseverance. It is Luna's fondest wish that the koi will help players to persevere in their music and their lives.

A symbol of rebirth, the phoenix represents beauty, power, vision and inspiration.

The triumphant spirit of the phoenix is perfectly captured in rosewood inlaid against a solid spruce top. Its full folk profile and onboard preamp delivers a sound as rich and freeing as the creature that inspired the design.

## ORACLE SERIES KOI, PHOENIX

laser etched koi and phoenix  
**BODY:** grand concert  
**TOP:** solid spruce  
**BACK & SIDES:** mahogany  
**NECK:** mahogany  
**FRETBOARD/BRIDGE:** ebony  
**PREAMP/TUNER:** B-Band T35  
**SCALE:** 25 1/2"  
**NUT SIZE:** 1 11/16"  
**FINISH:** gloss top, satin back & sides

OCL KOI 2  
OCL PHX 2





**ORACLE BUTTERFLY**  
A butterfly alights on a delicate flower at the sound hole of this charming instrument, inlaid in exotic woods against a cedar top. The butterfly is a powerful symbol of potential, transformation, resurrection, celebration and lightness of being.

**ORACLE DRAGONFLY**  
A fanciful trio of inlaid dragonflies gathered around the soundhole on a solid spruce top to make the Oracle Dragonfly among Luna Guitars' most distinctive models. Like the dragonfly from which it draws its inspiration, the Oracle Dragonfly speaks to the spirit's desire to find its way, to transform itself, to reach out through the magic of music.

**ORACLE DOLPHIN**  
Luna's Dolphin is a remarkable instrument featuring a trinity of inlaid rosewood dolphins swimming around the sound hole against a solid sitka spruce top.

ORACLE BUTTERFLY

ORACLE DRAGONFLY

ORACLE DOLPHIN

*"Set your life on fire. Seek those who fan your flames"*

ORACLE SERIES

**BUTTERFLY**

inlaid koa, quilted maple, dyed maple  
**BODY:** folk  
**TOP:** solid cedar  
**BACK & SIDES:** mahogany  
**NECK:** mahogany  
**FRETBOARD:** rosewood  
**PREAMP/TUNER:** B-Band T35  
**SCALE:** 25 1/2"  
**NUT SIZE:** 1 11/16"  
**FINISH:** gloss top, satin b/s

OCL BTf

**DRAGONFLY**

inlaid padauk, mahogany, dyed maple  
**BODY:** folk  
**TOP:** solid spruce  
**BACK & SIDES:** mahogany  
**NECK:** mahogany  
**FRETBOARD:** rosewood  
**PREAMP/TUNER:** B-Band T35  
**SCALE:** 25 1/2"  
**NUT SIZE:** 1 11/16"  
**FINISH:** gloss top, satin b/s

OCL DFY

**DOLPHIN**

**BODY:** folk  
**TOP:** solid spruce  
**BACK & SIDES:** rosewood  
**NECK:** mahogany  
**FRETBOARD:** rosewood  
**PREAMP/TUNER:** B-Band T35  
**SCALE:** 25 1/2"  
**NUT SIZE:** 1 11/16"  
**FINISH:** gloss top, satin b/s

OCL DPN



*"But listen to me. For one moment quit being sad.  
Hear blessings dropping their blossoms around you."*

TRINITY SERIES

Trinity - easily the most recognizable and ancient Celtic knot work design of all, it is a knot with no beginning or end - a continuum of many meanings. Like all Celtic knot work, it symbolizes the never-ending, eternal cycle of life.

Each Trinity features a solid top with the extraordinary knot work sound hole crafted of Rosewood with Mother of Pearl borders. Rosewood back and sides put the finishing touches on these elegant instruments. B-Band® preamps provide the ultimate in playing versatility. When your acoustic mood turns electric, the unit provides more than enough power for any setting and the equalizer lets you shape the sound just the way you like it. The electronics include a built-in tuner to take the guesswork out of a flawlessly tuned guitar.

**BODY:** parlor, dreadnaught or grand concert  
**TOP:** solid spruce  
**BACK & SIDES:** rosewood  
**NECK:** mahogany  
**FRETBOARD:** rosewood  
**PREAMP/TUNER:** B-Band T35  
**SCALE:** 25 1/2"  
**NUT SIZE:** 1 11/16"  
**FINISH:** gloss

TRI D  
TRI PAR  
TRI NYL





WABI SABI  
GC CUTAWAY  
**NEW!**

WABI SABI  
DREADNOUGHT  
**NEW!**

*"Wherever you are, and whatever you do, be in love."*

**EMBRACE IMPERFECTION!**

Wabi Sabi embraces imperfection. Characteristics of the wabi-sabi aesthetic include asymmetry, irregularity, simplicity, economy and appreciation of the organic nature of natural objects. Our Wabi-sabi guitars are constructed with B or C grade tops...usually rejected for being aesthetically imperfect but sounding the same as A grade tops. This is a brilliant combination as each guitar is different and we are able to offer a solid top guitar at a laminate guitar price.

**WABI SABI**

Celtic Zen brush stroke rosette  
**BODY:** full dreadnought and GC cutaway  
**TOP:** solid B-grade spruce  
**BACK & SIDES:** mahogany  
**NECK:** mahogany  
**FRETBOARD:** rosewood  
**NUT:** 1 11/16"  
**PREAMP/TUNER:** Luna proprietary on GC profile only / none on dreadnought  
**SCALE:** 25 1/2"  
**FINISH:** satin top, b&s

**WABI D**  
**WABI E GC**





**FAUNA SERIES  
SWIFT**

FAUNA SWIFT

The swift – a symbol of loyalty and fidelity – is dramatic on the quilt maple sound board against a branch of pink cherry blossoms.

- INLAY:** swift design
- BODY:** folk
- TOP:** quilted maple
- BACK & SIDES:** maple
- NECK:** mahogany
- FRETBOARD:** rosewood
- PREAMP/TUNER:** B-Band T35
- SCALE:** 25 1/2"
- NUT:** 1 5/8"
- FINISH:** Trans Toffee

**FAU SWIFT**

*“Respond to every call that excites your spirit.”*

Flora, Roman goddess of springtime and all that grows in the earth. Fauna, Roman Goddess of fertility and all of the animal life of any particular region. Inspired by these goddesses, Luna Guitars' Flora and Fauna models pay homage to flowers, insects and animals both real and mythical... each with their own unique symbolism.

Cutaway bodies topped in quilted maple with maple sides and backs or in black gloss finish give the series a full and satisfying range of sound that's the perfect compliment to their expression of nature's beauty. Equipped for either acoustic or electric play, the Flora & Fauna series offers maximum versatility in guitars with amazing stage presence.

The swift – a symbol of loyalty and fidelity – is dramatic on the quilt maple sound board against a branch of pink cherry blossoms.





FLORA ROSE



FLORA MOON FLOWER



FLORA PASSION FLOWER



FLORA LOTUS



FAUNA HUMMINGBIRD

*"Shine like the whole universe is yours."*

*"Do not feel lonely, the entire universe is inside you."*

**FLORA SERIES ROSE**

The rose design wraps around the sound hole before trailing gracefully onto the lower bout. The red-tinted abalone blossoms are stunning against the blonde quilt maple top.

**INLAY:** rose design  
**BODY:** folk cutaway  
**TOP:** quilted maple  
**BACK & SIDES:** maple  
**NECK:** mahogany  
**FRETBOARD:** rosewood  
**INLAY:** moonflower  
**PREAMP/TUNER:** B-Band T35  
**SCALE:** 25 1/2"  
**NUT:** 1 5/8"  
**FINISH:** Natural Gloss

**FLO RSE**

**MOON FLOWER**

Moonflowers are revered throughout many cultures as a medicinal or sacred visionary plant. Because they only bloom at night, they are a metaphor for the fact that out of the darkness comes creative blossoming.

**BODY:** folk  
**TOP:** quilt maple  
**BACK & SIDES:** maple  
**NECK:** mahogany  
**FRETBOARD:** ebony  
**INLAY:** moonflower  
**PREAMP/TUNER:** B-Band T35  
**SCALE:** 25 1/2"  
**NUT:** 1 5/8"  
**FINISH:** Trans Mallard

**FLO MOON CUST**

**PASSION FLOWER**

From the showy bloom that graces its sound hole to the delicate, small parlor body in dramatic transparent purple over quilted maple, the Passion Flower is a beautiful instrument.

**INLAY:** passion flower design  
**BODY:** parlor  
**TOP:** quilted maple  
**BACK & SIDES:** maple  
**NECK:** mahogany  
**FRETBOARD:** rosewood  
**INLAY:** moonflower  
**PREAMP/TUNER:** B-Band T35  
**SCALE:** 25 1/2"  
**NUT:** 1 5/8"  
**FINISH:** Trans Purple

**FLO PF QM**

**LOTUS**

The Flora Lotus' unique sound hole takes its shape from the outline of the pristine white flower floating majestically on a background of rich plum.

**INLAY:** lotus design  
**BODY:** grand concert cutaway  
**TOP:** quilted maple  
**BACK & SIDES:** maple  
**NECK:** mahogany  
**FRETBOARD:** rosewood  
**PREAMP/TUNER:** B-Band T35  
**SCALE:** 25 1/2"  
**NUT:** 1 5/8"  
**FINISH:** Trans Shiraz

**FLO LOT QM FLO LOT QM LEFTY**

**FAUNA SERIES HUMMINGBIRD**

An iridescent hummingbird hovers delightfully at the sound hole of this charming, easy-to-play, parlor-sized instrument.

**INLAY:** hummingbird design  
**BODY:** parlor  
**TOP:** quilted maple  
**BACK & SIDES:** maple  
**NECK:** mahogany  
**FRETBOARD:** rosewood  
**PREAMP/TUNER:** B-Band T35  
**SCALE:** 25 1/2"  
**NUT:** 1 5/8"  
**FINISH:** Natural Gloss

**FAU HUM**





*"Let yourself be silently drawn by the strange pull of what you really love. It will not lead you astray."*

**FAUNA SERIES  
DRAGONFLY**

A trio of abalone & mother-of-pearl dragonflies encircles the sound hole, speaking to the spirit's desire to find its way.

**BODY:** grand concert  
**TOP:** quilted maple  
**BACK & SIDES:** maple  
**NECK:** mahogany  
**FRETBOARD:** rosewood  
**PREAMP/TUNER:** B-Band T35  
**SCALE:** 25 1/2"  
**NUT:** 1 5/8"  
**FINISH:** Trans Teal

**FAU DF QM**

**BUTTERFLY**

An abalone butterfly alights on a delicate mother-of-pearl flower at the sound hole of this charming instrument.

**BODY:** folk cutaway  
**TOP:** quilted maple  
**BACK & SIDES:** maple  
**NECK:** mahogany  
**FRETBOARD:** rosewood  
**PREAMP/TUNER:** B-Band T35  
**SCALE:** 25 1/2"  
**NUT:** 1 5/8"  
**FINISH:** Natural Gloss

**FAU BTFLY**

**DOLPHIN**

A trinity of abalone dolphins swim around the sound hole, shimmering against trans azure waves.

**BODY:** folk cutaway  
**TOP:** quilted maple  
**BACK & SIDES:** maple  
**NECK:** mahogany  
**FRETBOARD:** rosewood  
**PREAMP/TUNER:** B-Band T35  
**SCALE:** 25 1/2"  
**NUT:** 1 5/8"  
**FINISH:** Trans Azure

**FAU DPN**



*"Not only the thirsty seek the water, the water as well seeks the thirsty."*

**KOI**

The koi has layers of meaning; many people view the koi fish as a symbol of how we should persevere in life.

**BODY:** folk cutaway  
**TOP:** select spruce  
**BACK & SIDES:** mahogany  
**NECK:** mahogany  
**FRETBOARD:** rosewood  
**PREAMP/TUNER:** B-Band T35  
**SCALE:** 25 1/2"  
**NUT:** 1 5/8"  
**FINISH:** Gloss Black

**FAU KOI**

**PHOENIX**

A symbol of triumphant rebirth, the phoenix represents beauty, power, vision and inspiration.

**BODY:** folk cutaway  
**TOP:** select spruce  
**BACK & SIDES:** mahogany  
**NECK:** mahogany  
**FRETBOARD:** rosewood  
**PREAMP/TUNER:** B-Band T35  
**SCALE:** 25 1/2"  
**NUT:** 1 5/8"  
**FINISH:** Gloss Black

**FAU PHX BLK**

**FAUNA SERIES  
DRAGON**

With a dramatic abalone dragon arching powerfully across its raven-black finish, this Fauna is a striking choice.

**BODY:** folk cutaway  
**TOP:** select spruce  
**BACK & SIDES:** mahogany  
**NECK:** mahogany  
**FRETBOARD:** rosewood  
**PREAMP/TUNER:** B-Band T35  
**SCALE:** 25 1/2"  
**NUT:** 1 5/8"  
**FINISH:** Gloss Black

**FAU DRA BLK**





ROSE NYLON

MUSE NYLON

HENNA NYLON

NYLON SERIES

Luna Guitars offers a wide variety of distinctive nylon designs, including a petite 6 string baritone uke and a travel guitar. What distinguishes Luna's Nylon series, other than the unique designs, is the 1 11/16" nut and comfortable neck profile. Luna's Nylon series guitars are perfect for those wanting the distinctive, passionate nylon sound – without adjusting to a wide, classical-style fingerboard. The Heartsong Nylon offers a USB output for ease of capturing your ideas.

The Muse offers a solid spruce top and the Heartsong offers a select spruce top – while the Henna and Deco nylons offer solid cedar tops, for a rich, dark sound.

**ROSE**

abalone rose design  
**BODY:** folk cutaway  
**TOP:** quilted maple  
**BACK & SIDES:** maple  
**NECK:** mahogany  
**FRETBOARD:** rosewood  
**PREAMP/TUNER:** B-Band T35  
**SCALE:** 25 1/2"  
**NUT SIZE:** 1 5/8"  
**FINISH:** gloss top

RSE NYL

**MUSE**

**BODY:** folk  
**TOP:** solid sitka spruce  
**BACK & SIDES:** rosewood  
**NECK:** mahogany  
**FRETBOARD:** rosewood  
**PREAMP/TUNER:** B-Band T35  
**SCALE:** 25 1/2"  
**NUT SIZE:** 1 11/16"  
**FINISH:** satin

MUS NYL

**HENNA**

**BODY:** folk  
**TOP:** solid cedar  
**BACK & SIDES:** mahogany  
**NECK:** mahogany  
**FRETBOARD:** rosewood  
**PREAMP/TUNER:** B-Band T35  
**SCALE:** 25 1/2"  
**NUT SIZE:** 1 11/16"  
**FINISH:** satin

HEN 02 NYL



DECO NYLON

HEARTSONG NYLON  
**USB-EQUIPPED!**

SAFARI NYLON

TATTOO SIX-STRING UKE

*"Moonlight floods the whole sky from horizon to horizon; How much it can fill your room depends on its windows."*

**DECO**

**BODY:** grand auditorium  
**TOP:** solid cedar  
**BACK & SIDES:** solid rosewood  
**NECK:** mahogany  
**FRETBOARD/BRIDGE:** ebony  
**PREAMP/TUNER:** B-Band T55  
**SCALE:** 25 1/2"  
**NUT SIZE:** 1 11/16"  
**FINISH:** gloss top, solid b/s

ART DECO NYL

**HEARTSONG**

**BODY:** folk  
**TOP:** select spruce  
**BACK & SIDES:** mahogany  
**NECK:** mahogany  
**FRETBOARD/BRIDGE:** rosewood  
**PREAMP/TUNER:** B-Band T35 + USB  
**SCALE:** 25 1/2"  
**NUT SIZE:** 1 11/16"  
**FINISH:** satin

SONG NYLON

**SAFARI**

gig bag included  
**BODY:** 3/4 travel  
**TOP:** select spruce  
**BACK & SIDES:** mahogany  
**NECK:** mahogany  
**FRETBOARD:** rosewood  
**PREAMP/TUNER:** B-Band T35  
**SCALE:** 22"  
**NUT SIZE:** 1 11/16"  
**FINISH:** satin b/s

SAF NYL

NYLON SERIES  
**TATTOO 6-STRING**

laser-etch tattoo design  
 by Alex Morgan  
**BODY:** 30" baritone  
**TOP:** select spruce  
**BACK & SIDES:** mahogany  
**NECK:** mahogany  
**FINGERBOARD:** rosewood  
**SCALE:** 19"  
**FINISH:** satin

UKE TAT 6





SAFARI FANTASY  
**NEW!**

*"Be a lamp, or a lifeboat, or a ladder. Help someone's soul heal."*

These little dreadnoughts make the perfect traveling companions... light on your back, and easy on your wallet! Though compact, these guitars deliver 100% full tone and voice. Beautifully handcrafted of select spruce or mahogany, they offer a mini sampling of some of Luna's most beloved designs, and double as ultimate student guitars for young players. Great sound! Great Fun!

This jewel boasts fantasy artwork by Alex Morgan featuring laser etched faeries, ferns, flowers and an owl. Who could resist this magical instrument?

**SAFARI SERIES**  
**SAFARI FANTASY**

- Laser etched Fantasy design
- PADDED GIG BAG INCLUDED
- BODY: 3/4 travel size
- TOP: select spruce
- BACK & SIDES: mahogany
- NECK: mahogany
- FINGERBOARD/BRIDGE: ebony
- SCALE: 22"
- NUT: 1 11/16"
- FINISH: satin

**SAF FANTASY**





SAFARI DRAGONFLY

SAFARI DOLPHIN

SAFARI SUPREME

SAFARI TATTOO

(MORE 3/4 GUITARS ON PAGE 42)



NATURAL ACOUSTIC AND NYLON

SAFARI PEACE

SAFARI HENNA

SAFARI MUSE MAHOGANY

SAFARI STARRY

(MORE 3/4 GUITARS ON PAGE 42)

*"Lovers find secret places inside this violent world where they make transactions with beauty."*

*"What matters is how quickly you do what your soul directs."*

**SAFARI SERIES DRAGONFLY**

Inlaid Dragonfly rosette  
GIG BAG INCLUDED  
BODY: 3/4 travel size  
TOP: select spruce  
BACK & SIDES: mahogany  
NECK: mahogany  
SCALE: 22"  
NUT: 1 11/16"  
FINISH: Satin

SAF DF NAT

**SAFARI SERIES DOLPHIN**

Inlaid Dolphin rosette  
GIG BAG INCLUDED  
BODY: 3/4 travel size  
TOP: select spruce  
BACK & SIDES: mahogany  
NECK: mahogany  
SCALE: 22"  
NUT: 1 11/16"  
FINISH: Satin

SAF DPN

**SAFARI SERIES SUPREME SOLID TOP**

laser-etched henna design by Alex Morgan  
PADDED GIG BAG INCLUDED  
BODY: 3/4 travel size  
TOP: select spruce  
BACK & SIDES: rosewood  
NECK: mahogany  
FINGERBOARD/BRIDGE: ebony  
SCALE: 22"  
NUT: 1 11/16"  
FINISH: satin

SAF SUPREME

**SAFARI SERIES TATTOO**

laser etched Tattoo design  
GIG BAG INCLUDED  
BODY: 3/4 travel size  
TOP: select spruce  
BACK & SIDES: mahogany  
NECK: mahogany  
SCALE: 22"  
NUT: 1 11/16"  
FINISH: Satin

SAF TATTOO

**SAFARI SERIES PEACE**

Laser etched Peace rosette  
GIG BAG INCLUDED  
BODY: 3/4 travel size  
TOP: select spruce  
BACK & SIDES: mahogany  
NECK: mahogany  
SCALE: 22"  
NUT: 1 11/16"  
FINISH: Satin

SAF PCE

**SAFARI SERIES HENNA**

Laser etched Henna design  
GIG BAG INCLUDED  
BODY: 3/4 travel size  
TOP: select spruce  
BACK & SIDES: mahogany  
NECK: mahogany  
SCALE: 22"  
NUT: 1 11/16"  
FINISH: Satin

SAF HEN

**SAFARI SERIES MUSE**

Rosewood Celtic Knot rosette  
GIG BAG INCLUDED  
PREAMP/TUNER: B-Band T35  
BODY: 3/4 travel size  
TOP: select spruce  
BACK & SIDES: mahogany  
NECK: mahogany  
SCALE: 22"  
NUT: 1 11/16"  
FINISH: Satin

SAF MUS SPR  
SAF MUS MAH  
SAF NYL

**SAFARI SERIES STARRY**

"Starry Night" design  
GIG BAG INCLUDED  
BODY: 3/4 travel size  
TOP: select spruce  
BACK & SIDES: trans blue  
NECK: mahogany  
SCALE: 22"  
NUT: 1 11/16"  
FINISH: Satin

SAF STR





GYPSY DREAM  
NEW!

**GYPSY SERIES**  
**GYPSY DREAM**

- INLAY: laser etch art by Alex Morgan
- BODY: parlor
- TOP: select spruce
- BACK & SIDES: mahogany
- NECK: mahogany
- FRETBOARD: rosewood
- TUNER: onboard
- SCALE: 25 1/2"
- NUT: 1 5/8"
- FINISH: satin

**GYP DREAM**

*"In the house of lovers, the music never stops, the walls are made of songs & the floor dances"*

The Gypsy acoustics are perfect student guitars for older children or adults that are easy on the eyes AND the wallet. Combining unique styling with value and integrity, the Gypsy series make your purchasing experience simple, accessible and affordable.

The Gypsy Dream is a lovely addition with artwork by Alex Morgan featuring laser etched butterflies and the inspirational words "Arise...be all you dream." These words apply to both music and life and are the perfect mantra for a budding musician to give wing to their musical impulses.





GYPSY FANTASIE  
"LADY OF SHALLOT"

GYPSY FANTASIE  
"SPIRIT OF THE NIGHT"

GYPSY MUSE

GYPSY MUSE PARLOR

Our Gypsy acoustics are perfect student guitars, for older children or adults, that feature the look of some of our regular series at an economical price.

GYPSY SERIES

THE GYPSY FANTASIE series is perfect for players who want a visually stunning guitar, non-players who seek inspiration to learn, and folks who want a beautiful piece of art for their home that also functions as an instrument for visiting friends to play

**GYPSY FANTASIE**  
LOS art by John Waterhouse  
SOTN art by John Atkinson Grimshaw  
BODY: grand concert  
TOP: select spruce  
BACK & SIDES: mahogany  
NECK: mahogany/rosewood  
SCALE: 25 1/2"  
NUT: 1 11/16"  
FINISH: gloss  
GYP LOS  
GYP SOTN

**GYPSY MUSE**  
laser etched graphic  
BUILT-IN TUNER  
HARDSHELL CASE INCLUDED  
BODY: dreadnought  
TOP: select spruce  
BACK & SIDES: mahogany  
FINGERBOARD: rosewood  
NECK: mahogany  
SCALE: 25 1/2"  
NUT: 1 5/8"  
FINISH: satin  
GYP MUS

**GYPSY MUSE PARLOR**  
laser etched graphic  
GIG BAG INCLUDED  
BODY: parlor  
TOP: select spruce  
BACK & SIDES: mahogany  
FINGERBOARD: rosewood  
NECK: mahogany  
SCALE: 25 1/2"  
NUT: 1 5/8"  
FINISH: satin  
GYP PAR

*"Try something different. Surrender."*



GYPSY ZEBRA  
NEW!

GYPSY ASH  
NEW!

GYPSY SPALT  
NEW!

GYPSY BUBINGA  
NEW!

Our Gypsy acoustics are perfect student guitars, for older children or adults, that feature the unique look of some of our regular series at an economical price.

Featured above, ordinary guitars take on an exotic flare with 4 extraordinary veneer...your choice of Zebra, Ash, Spalt or Bubinga. Because of the organic nature of wood...each one is literally one of a kind. The Zebra and Ash include Luna proprietary built in preamps. Spalt and Bubinga are acoustic only.

*"Forget safety. Live where you fear to live."*

GYPSY SERIES  
GYPSY EXOTICS

**EXOTIC WOODS**  
BODY: grand concert  
TOP: select spruce  
BACK & SIDES: mahogany  
NECK: mahogany  
FRETBOARD: rosewood  
PREAMP: Zebra and Ash only  
SCALE: 25 1/2"  
NUT: 1 11/16"  
FINISH: gloss  
GYP BUBINGA  
GYP SPALT  
GYP E ZBR  
GYP E ASH





TEAL QA  
NEW!

PURPLE QA  
NEW!

RED QA  
NEW!

NATURAL QA  
NEW!

*"You dance inside my chest, where no one sees you, but sometimes I do, and that sight becomes this art."*

GYPSY SERIES  
GYPSY EXOTICS

**EXOTIC WOODS**  
**BODY:** grand concert  
**TOP:** select spruce  
**BACK & SIDES:** mahogany  
**NECK:** mahogany  
**FRETBOARD:** rosewood  
**PREAMP:** Luna  
**SCALE:** 25 1/2"  
**NUT:** 1 11/16"  
**FINISH:** gloss

Take your pick of luscious lollipop shades of trans teal, trans purple, trans red or clear gloss over a quilt ash veneer.

All 4 feature Luna proprietary built in preamps. Plugged in or acoustic, when you want your guitar and your music to be as colorful as you are, these little jewels are the perfect choice.

**GYPE QA TPP**  
**GYPE QA TRD**  
**GYPE QA TEAL**  
**GYPE QA GN**



AURORA ACOUSTICS

NEW!  
 NEW!  
 NEW!  
 AURORA ELECTRICS

*"The garden of the world has no limits, except in your mind."*

AURORA BOREALIS SERIES

**BODY:** 36 inch  
**TOP:** Basswood  
**BACK & SIDES:** Basswood  
**NECK:** Mahogany  
**STRINGS:** Steel  
**FRETBOARD/BRIDGE:** Ebonized Maple  
**SCALE:** 22.25"  
**NUT WIDTH:** 1 11/16"  
**FINISH:** Gloss

Luna breaks new ground with the Aurora electrics...fresh and youthful, the Aurora electrics are aimed at young musicians or those who have managed to stay young at heart. These minis are an incomparable first guitar for the young budding musician or a sharp little travel guitar for the seasoned player.

**AR BOR WHITE**  
**AR BOR BLK**  
**AR BOR TEAL**  
**AR BOR PINK**

ELECTRIC  
AURORA BOREALIS

**BODY:** Single cutaway  
**TOP:** Basswood  
**BACK & SIDES:** Basswood  
**NECK:** Mahogany  
**FRETBOARD/BRIDGE:** Rosewood  
**Pickups:** Single Humbucking  
**SCALE:** 22.25"  
**NUT WIDTH:** 1 5/8"

Acoustic integrity and perfect sizing assure that young players will have a positive learning experience on a well-crafted instrument that they won't outgrow. The rosewood neck is adorned with Luna's signature moon phase fret markers, and the sound hole is embraced by a crescent moon rosette – giving the Aurora Borealis the same look and feel that grace Luna's full size models.

**AR ELECT WHITE**  
**AR ELECT BLK**  
**AR ELECT TEAL**  
**AR ELECT PINK**





DADDY-O  
NEW!

*"Look for the answer inside the question"*

Skooppy loopy koo! Skippitty dippitty wah wah wah! Like, dig that jazz, daddy-o!

Luna has introduced 3 new 50's ukes. Daddy-O, Pink Martini and Radioactive.

As hip as the retro design and slang that inspired them, whether you're cooling it or cranked, they promise to be a blast to play. Dig it?

**DADDY-O!**

50's inspired graphics  
AQUILA STRINGS  
GIG BAG INCLUDED  
BODY: 23" concert  
TOP: select mahogany  
BACK & SIDES: mahogany  
NECK: nato/mahogany  
FINGERBOARD: rosewood  
SCALE: 15"  
FINISH: satin

**UKE DADDYO**





TATTOO SOPRANO

TATTOO CONCERT  
ELECTRIC VERSION  
PERFECT WITH OUR  
UKE SUITCASE AMP!

TATTOO 6 BARITONE

TATTOO TENOR



TATTOO  
CONCERT  
ELECTRIC



PEACE LOVE

MALUHIA CONCERT  
PERFECT WITH OUR  
UKE SUITCASE AMP!

HONU SOPRANO

MO'O CONCERT  
PERFECT WITH OUR  
UKE SUITCASE AMP!

*"Very little grows on jagged rock. Be ground.  
Be crumbled, so wildflowers will come up where you are."*

Luna's **Tattoo series** ukuleles take their design from traditional Hawaiian body ornamentation. The designs were monochromatic, tattooed in black against brown skin. The patterns and layout were strongly geometric, and there were many shapes and symbols which represented the natural island world – stones, waves, fish, sharks, turtles, rain, sun, birds, et cetera. The design is primarily based on waves and shark's teeth – which are also echoed as fret markers.

**SOPRANO**

**laser-etch Polynesian tattoo design by Alex Morgan**  
AQUILA STRINGS  
GIG BAG INCLUDED  
BODY: 21" pineapple soprano  
TOP: select mahogany  
BACK & SIDES: mahogany  
NECK: nato/mahogany  
FINGERBOARD: rosewood  
SCALE: 13"  
FINISH: satin

**UKE TATTOO**

**CONCERT / CONCERT ELECTRIC**

**laser-etch Polynesian tattoo design by Alex Morgan**  
ONBOARD PREAMP (on UKE TEC MAH)  
AQUILA STRINGS  
GIG BAG INCLUDED  
BODY: 23" concert  
TOP: select mahogany  
BACK & SIDES: mahogany  
NECK: nato/mahogany  
FINGERBOARD: rosewood  
SCALE: 15"  
FINISH: satin

**UKE TC MAH  
UKE TEC MAH**

**TATTOO 6**

For guitar players who secretly covet the portability & convenience of a uke, our 6-string baritone uke is a mini guitar! Stash it in your cubicle, your car, on the coffee table, or wherever you'd enjoy a spontaneous jam!

**laser-etch Polynesian tattoo design by Alex Morgan**  
AQUILA STRINGS  
BODY: 30" baritone  
TOP: select spruce  
BACK & SIDES: mahogany  
NECK: mahogany  
FINGERBOARD: rosewood  
SCALE: 19"  
FINISH: satin

**UKE TAT 6**

**TENOR**

**laser-etch Polynesian tattoo design by Alex Morgan**  
AQUILA STRINGS  
GIG BAG INCLUDED  
BODY: 26" tenor  
TOP: select mahogany  
BACK & SIDES: mahogany  
NECK: mahogany  
FINGERBOARD: rosewood  
SCALE: 17"  
FINISH: satin

**UKE TTN MAH**

**PEACE LOVE**

Ukes, Peace, Love and Music... what more could anyone wish for? Whatever your musical or political bag is, we hope you will enjoy Luna's tiny tribute to the 60's. Groovy looks and killer quality for not a lot of bread. Dig it!

**laser-etch Sixties design by Yvonne de Villiers**  
ONBOARD PREAMP  
AQUILA STRINGS  
BODY: 21" soprano  
TOP: mahogany  
BACK & SIDES: mahogany  
NECK: mahogany  
FINGERBOARD: rosewood  
SCALE: 13"  
FINISH: clear satin

**UKE PCE**

**MALUHIA**

'Maluhia' means 'peace' in Hawaiian. The Malu uke features a laser-etched peace sign at the sound hole – and the word "peace" in different languages, forming a graceful continuum across the soundboard. Now available as an electric!

**laser-etch Peace design by Alex Morgan**  
AQUILA STRINGS  
GIG BAG INCLUDED  
BODY: 23" concert  
TOP: select mahogany  
BACK & SIDES: mahogany  
NECK: nato/mahogany  
FINGERBOARD: rosewood  
SCALE: 15"  
FINISH: satin

**UKE MALU UKE MALU EL**

**HONU**

'Honu' means 'turtle' in Hawaiian – a symbol of longevity and endurance. The Honu features a turtle at the sound hole, rendered in a Polynesian tattoo style. The fret markers are stylized shark's teeth.

**laser-etch turtle design by Alex Morgan**  
AQUILA STRINGS  
GIG BAG INCLUDED  
BODY: 21" soprano  
TOP: select mahogany  
BACK & SIDES: mahogany  
NECK: nato/mahogany  
FINGERBOARD: rosewood  
SCALE: 13"  
FINISH: satin

**UKE HONU**

**MO'O**

'Mo'o' means 'lizard' in Hawaiian – to the early Hawaiians, a symbol of spirituality and good fortune. The lizards on the Mo'o uke are set against the leaves of *Monstera Deliciosa* – a plant found throughout Hawaii. Now available with preamp option!

**laser-etch lizard design by Alex Morgan**  
AQUILA STRINGS  
GIG BAG INCLUDED  
BODY: 23" concert  
TOP: select mahogany  
BACK & SIDES: mahogany  
NECK: nato/mahogany  
FINGERBOARD: rosewood  
SCALE: 15"  
FINISH: satin

**UKE MO MAH UKE MO EL**





GREAT WAVE SOPRANO

GREAT WAVE CONCERT

The Great Wave Off Kanagawa (1830-1833), also known as The Great Wave, is a woodblock print by the Japanese artist Hokusai. Copies of the print are in many collections, including the Metropolitan Museum of Art in New York City and The British Museum in London. This masterpiece is featured on the front of Luna's 21" Great Wave Soprano and 23" Great Wave Concert, and can now be in your own personal ukulele collection!

**GREAT WAVE SOPRANO**

Great Wave design by Hokusai  
AQUILA STRINGS  
GIG BAG INCLUDED  
BODY: 21" pineapple soprano  
TOP: select mahogany  
BACK & SIDES: trans blue mahogany  
NECK: nato/mahogany  
FINGERBOARD: rosewood  
SCALE: 13"  
FINISH: satin

UKE GWS

**GREAT WAVE CONCERT**

Great Wave design by Hokusai  
AQUILA STRINGS  
GIG BAG INCLUDED  
BODY: 23" concert cutaway  
TOP: select mahogany  
BACK & SIDES: trans blue mahogany  
NECK: nato/mahogany  
FINGERBOARD: rosewood  
SCALE: 15"  
FINISH: satin

UKE GWC

*"Observe the wonders as they occur around you. Don't claim them. Feel the artistry moving through and be silent."*



FLORAL CONCERT PERFECT WITH OUR UKE SUITCASE AMP!

DOLPHIN CONCERT PERFECT WITH OUR UKE SUITCASE AMP!

**FLORAL CONCERT**

Hibiscus & Plumeria grace the sound hole, symbolizing the springtime of birth and life, and reminding us to seize the day.

abalone floral inlay  
ONBOARD PREAMP  
AQUILA STRINGS  
GIG BAG INCLUDED  
BODY: 23" concert cutaway  
TOP: select flame maple top  
BACK & SIDES: select maple  
NECK/BINDING: maple  
FINGERBOARD: rosewood  
SCALE: 15"  
FINISH: trans plum gloss

UKE FLO

**DOLPHIN CONCERT**

A trio of inlaid abalone & mother of pearl dolphins play around the sound hole, evoking the rejuvenating power of water.

abalone dolphin inlay  
ONBOARD PREAMP  
AQUILA STRINGS  
GIG BAG INCLUDED  
BODY: 23" concert cutaway  
TOP: select flame maple top  
BACK & SIDES: select maple  
NECK/BINDING: maple  
FINGERBOARD: rosewood  
SCALE: 15"  
FINISH: trans azure gloss

UKE DPN



HIGH TIDE CONCERT KOA PERFECT WITH OUR UKE SUITCASE AMP!

HIGH TIDE TENOR OVANGKOL PERFECT WITH OUR UKE SUITCASE AMP!

HIGH TIDE BARITONE ZEBRA PERFECT WITH OUR UKE SUITCASE AMP!

HIGH TIDE TENOR 8-STRING MAHOGANY PERFECT WITH OUR UKE SUITCASE AMP!

*"If Light is in your heart you will find your way home."*

Luna's High Tide series takes its inspiration from the full moon at the first fret – which causes the abalone wave fret markers below it to "rise" as they make their way up the fretboard, towards the moon's pull. High Tide ukes are crafted from luthier-grade select koa, ovangkol and zebrawood, and the Luna "full moon" sticker inside the sound hole is framed by an abalone ring.

**CONCERT KOA**

abalone High Tide fret markers  
ONBOARD PREAMP  
AQUILA STRINGS  
GIG BAG INCLUDED  
BODY: 23" concert cutaway  
TOP, BACK & SIDES: koa  
NECK: nato/mahogany  
FINGERBOARD: rosewood  
SCALE: 15"  
FINISH: satin

UKE HTC KOA

**TENOR OVANGKOL**

abalone High Tide fret markers  
ONBOARD PREAMP  
AQUILA STRINGS  
GIG BAG INCLUDED  
BODY: 26" tenor cutaway  
TOP, BACK & SIDES: ovangkol  
NECK: nato/mahogany  
FINGERBOARD: rosewood  
SCALE: 17"  
FINISH: satin

UKE HTT OVA

**BARITONE ZEBRA**

abalone High Tide fret markers  
ONBOARD PREAMP  
AQUILA STRINGS  
GIG BAG INCLUDED  
BODY: 30" baritone  
TOP, BACK & SIDES: zebrawood  
NECK: nato/mahogany  
FINGERBOARD: rosewood  
SCALE: 19"  
FINISH: satin

UKE HTB ZBR

**TENOR 8 MAHOGANY**

abalone High Tide fret markers  
ONBOARD PREAMP  
AQUILA STRINGS  
GIG BAG INCLUDED  
BODY: 26" tenor 8-string  
TOP, BACK & SIDES: mahogany  
NECK: nato/mahogany  
FINGERBOARD: rosewood  
SCALE: 17"  
FINISH: satin

UKE HTT 8





SOLID SPRUCE  
DOLPHIN CONCERT

SOLID CEDAR  
TAPA CONCERT  
PERFECT WITH OUR  
UKE SUITCASE AMP!

SOLID SPRUCE  
DRAGONFLY CONCERT

SOLID CEDAR  
MO'O CONCERT  
PERFECT WITH OUR  
UKE SUITCASE AMP!

*"Why struggle to open a door between us when the whole wall is an illusion?"*

### DOLPHIN CONCERT

A remarkable instrument, featuring a trinity of inlaid rosewood and mahogany dolphins swimming around the sound hole – on a solid spruce top with mahogany back and sides.

**inlaid rosewood & mahogany dolphin**  
**AQUILA STRINGS**  
**GIG BAG INCLUDED**  
**BODY:** 23" concert  
**TOP:** solid spruce  
**BACK & SIDES:** mahogany  
**NECK:** mahogany  
**FINGERBOARD:** rosewood  
**SCALE:** 15"  
**FINISH:** satin

**UKE DPN SPR**

### TAPA CONCERT

Tapa is a bark cloth traditionally made in the Pacific islands, decorated with repeated motifs such as fish and plants. Luna's solid cedar Tapa uke combines beautiful, authentic form with function.

**laser-etch tapa design**  
**by Alex Morgan**  
**ONBOARD PREAMP**  
**AQUILA STRINGS**  
**GIG BAG INCLUDED**  
**BODY:** 23" concert  
**TOP:** solid cedar  
**BACK & SIDES:** mahogany  
**NECK:** mahogany  
**FINGERBOARD:** rosewood  
**SCALE:** 15"  
**FINISH:** satin

**UKE TAPA CDR**

### DRAGONFLY CONCERT

Let your imagination fly free with this uke! A fanciful trio of inlaid spalt dragonflies gather around the sound hole – on a solid spruce top with mahogany back and sides.

**inlaid spalt dragonfly**  
**AQUILA STRINGS**  
**GIG BAG INCLUDED**  
**BODY:** 23" concert  
**TOP:** solid spruce  
**BACK & SIDES:** mahogany  
**NECK:** mahogany  
**FINGERBOARD:** rosewood  
**SCALE:** 15"  
**FINISH:** satin

**UKE DFY SPR**

### MO'O CONCERT

To the early Hawaiians, mo'o (lizards) were a symbol of spirituality and good fortune. These lucky Mo'o's (pronounced mo-ho) are sure to bring good mojo to your playing!

**laser-etch lizard design**  
**by Alex Morgan**  
**ONBOARD PREAMP**  
**AQUILA STRINGS**  
**GIG BAG INCLUDED**  
**BODY:** 23" concert  
**TOP:** solid cedar  
**BACK & SIDES:** mahogany  
**NECK:** mahogany  
**FINGERBOARD:** rosewood  
**SCALE:** 15"  
**FINISH:** clear satin

**UKE MO CDR**



ALL SOLID MAHOGANY  
PEARL CONCERT

*"Be melting snow.  
Wash yourself of  
yourself".*



ALL SOLID MAHOGANY  
CORAL CONCERT

### Luna is proud to present two unique and affordable ALL SOLID ukuleles.

Their full, resonant and articulate sounds – combined with two brand-new, aquatic-themed laser etch designs – results in instruments that will delight the full range of senses.

The delicate etched **sea horse** symbolizes creativity, imagination, good luck, fatherhood, vigilance, grace and confidence. The pearl on the same uke symbolizes triumph over adversity, purity, and spiritual transformation – and is associated with water, the moon and feminine energy.

The graceful etched **fish** mirrors the flowing lines of the kelp, and symbolizes fertility, eternity, creativity, happiness, fatherhood, fidelity and transformation. The spiral shape of the abalone shell symbolizes evolution and holistic growth, surrender, release, and the revolutions of time, stars, planets and geometry of natural growth – as seen throughout nature.

### PEARL

**etched sea horse design**  
**with pearl inlay**  
**AQUILA STRINGS**  
**GIG BAG INCLUDED**  
**BODY:** 23" concert  
**TOP, BACK & SIDES:** all-solid mahogany  
**NECK:** mahogany  
**FINGERBOARD/BRIDGE:** rosewood  
**SCALE:** 15"  
**FINISH:** open pore satin

**UKE PEARL**

### CORAL

**etched kelp/fish design**  
**with abalone shell inlay**  
**AQUILA STRINGS**  
**GIG BAG INCLUDED**  
**BODY:** 23" concert  
**TOP, BACK & SIDES:** all-solid mahogany  
**NECK:** mahogany  
**FINGERBOARD/BRIDGE:** rosewood  
**SCALE:** 15"  
**FINISH:** open pore satin

**UKE CORAL**





MAPLE BURL

SPALT MAPLE

OLIVE ASH BURL

*"Be empty of worrying.... Why do you stay in prison when the door is so wide open? Move outside the tangle of fear-thinking."*

Introducing Luna's **Exotic series** ukes! These three tropical wood jewels invoke balmy tropical nights, with a crescent moon shape sound hole, and Luna's signature moon phase fret markers in mother-of-pearl. Take your pick of three beautiful offerings... olive ash burl, maple burl, or spalt maple.

**MAPLE BURL**

crescent moon soundhole  
AQUILA STRINGS  
GIG BAG INCLUDED  
BODY: 23" concert  
TOP, BACK & SIDES: maple burl  
NECK: nato  
FINGERBOARD: rosewood  
SCALE: 15"  
FINISH: satin

UKE EX MB

**SPALT MAPLE**

crescent moon soundhole  
AQUILA STRINGS  
GIG BAG INCLUDED  
BODY: 23" concert  
TOP, BACK & SIDES: spalt maple  
NECK: nato  
FINGERBOARD: rosewood  
SCALE: 15"  
FINISH: satin

UKE EX SM

**OLIVE ASH BURL**

crescent moon soundhole  
AQUILA STRINGS  
GIG BAG INCLUDED  
BODY: 23" concert  
TOP, BACK & SIDES: olive ash burl  
NECK: nato  
FINGERBOARD: rosewood  
SCALE: 15"  
FINISH: satin

UKE EX OA



DADDY-O  
NEW!

RADIOACTIVE  
NEW!

PINK MARTINI  
NEW!

*"There is a morning inside you waiting to burst open into Light."*

**DADDY-O!**

50's inspired graphics  
AQUILA STRINGS  
GIG BAG INCLUDED  
BODY: 23" concert  
TOP: select mahogany  
BACK & SIDES: mahogany  
NECK: nato/mahogany  
FINGERBOARD: rosewood  
SCALE: 15"  
FINISH: satin

UKE DADDYO

**RADIOACTIVE**

50's inspired graphics  
AQUILA STRINGS  
GIG BAG INCLUDED  
BODY: 23" concert  
TOP: select mahogany  
BACK & SIDES: mahogany  
NECK: nato/mahogany  
FINGERBOARD: rosewood  
SCALE: 15"  
FINISH: satin

UKE RADIOACTIVE

**PINK MARTINI**

50's inspired graphics  
AQUILA STRINGS  
GIG BAG INCLUDED  
BODY: 23" concert  
TOP: select mahogany  
BACK & SIDES: mahogany  
NECK: nato/mahogany  
FINGERBOARD: rosewood  
SCALE: 15"  
FINISH: satin

UKE PINK MARTINI





HEARTSONG UKE  
USB-EQUIPPED FOR  
RECORDING ON THE FLY!



ULU 8" CONCERT BANJO UKE



RESONATOR UKE



HIGH TIDE  
UKE BASS



TATTOO  
UKE BASS



GLOSS BLACK  
UKE BASS

*"And don't think the garden loses its ecstasy in winter. It's quiet, but the roots are down there riotous."*

Capture your inspiration on the fly with Luna's USB-equipped **Heartsong ukulele!** The USB output gives you plug-and-play capability into your favorite recording software. Now you can record your songs and ideas remotely by plugging directly into an iPad, iPhone or laptop... wherever and whenever your Muse finds you! And the great news is that it's practical, beautiful AND affordable. Please see page 7-8 for more detailed information on this unique system.

The patterns etched onto the back of Luna's **banjo uke** is a tribute to traditional Hawaiian quilt design. Legends say a breadfruit pattern was the first truly Hawaiian quilt design, and the first design traditionally used by beginners of the craft. Luna chose the ULU (breadfruit) as inspiration because this plant was sacred, and an essential part of early Hawaiian life.

The "**UKENATOR**", or resonator ukulele, is an amazing addition to any uke collection. The front is etched with a traditional Polynesian tattoo design inspired by tiki gods... large wood and stone carvings of humanoid forms, found in Polynesia.

A resonator ukulele is louder than a standard wooden ukulele, and has a different tone quality.

### HEARTSONG UKE

AQUILA STRINGS  
BODY: concert  
TOP: spruce  
BACK & SIDES: mahogany  
PREAMP: B-Band w/USB output  
NECK: mahogany  
FINGERBOARD: rosewood  
SCALE: 15"  
FINISH: satin

### UKE SONG

### ULU BANJO UKE

laser etched breadfruit design  
chrome hardware, 12-piece bracket  
tortoise binding  
BODY: concert  
RESONATOR: 8" mahogany  
BACK: maple  
NECK: mahogany  
FINGERBOARD: rosewood  
SCALE: 15.5"  
NUT: 1 9/16"  
FINISH: satin tobacco burst

### UKE B8 ULU

### RESONATOR UKE

etched Tiki motif  
AQUILA STRINGS  
BODY: 23" concert  
TOP, BACK & SIDES: chrome plated brass  
NECK: mahogany  
FINGERBOARD: rosewood  
SCALE: 15"  
FINISH: chrome

### UKE TIKI RES

*"Let the waters settle and you will see the moon and the stars mirrored in your own being."*

### HIGH TIDE UKE BASS

FLATWOUND STRINGS  
BODY: baritone  
TOP: solid spruce  
BACK & SIDES: ovangkol  
PREAMP: Luna  
NECK: mahogany  
FINGERBOARD: rosewood  
SCALE: 20.2"  
FINISH: satin

### UKE BASS HT TSB

### TATTOO UKE BASS

FLATWOUND STRINGS  
BODY: baritone  
TOP: spruce  
BACK & SIDES: mahogany  
PREAMP: Luna  
NECK: mahogany  
FINGERBOARD: rosewood  
SCALE: 20.2"  
FINISH: satin

### UKE BASS TAT SPR

### GLOSS BLACK UKE BASS

FLATWOUND STRINGS  
BODY: baritone  
TOP: spruce  
BACK & SIDES: mahogany  
PREAMP: Luna  
NECK: mahogany  
FINGERBOARD: rosewood  
SCALE: 20.2"  
FINISH: gloss black

### UKE BASS CBK

Luna's **ukulele basses** are fun to play - for portable performance or practice anywhere! They are 21" short scale instruments, featuring flatwound strings that are tuned to E-A-D-G like a traditional bass guitar - but one octave up.

We offer our popular High Tide and Tattoo designs - with the addition of a stunning gloss black model with maple rosette and binding, with sharks teeth fret markers. All basses come equipped with Luna preamps - although, unlike bass ukes with nylon strings, our flatwound strings offer a robust acoustic sound even without amplification.

Whether you are a full-size bass player looking to practice on your lunch hour - or a ukulele player looking for a new challenge in the territory of lower pitches and a bass-like approach - Luna's distinctive styling, combined with affordable prices, make these basses an irresistible addition to your collection.





STEEL MAGNOLIA

The resonator guitar is a favorite of Hawaiian, blues, country, and bluegrass players. We wanted a design that would appeal to the vast geographical stretch from Hawaii to the Mississippi Delta. Since different species of the lovely Magnolia tree are found in all of these areas, a Magnolia blossom seemed to be the perfect choice... hence, the **Steel Magnolia**.

**STEEL MAGNOLIA**

magnolia-inspired engraving (front & back)  
 BODY: parlor  
 TOP, BACK & SIDES: nickel-plated iron  
 NECK: FSC-certified mahogany  
 FINGERBOARD: rosewood  
 PICKUPS: lipstick and piezo  
 SCALE: 24 3/4"  
 NUT: 1 1/8"  
 FINISH: bright nickel

**STL MAG RES**



5-STRING TRINITY BANJO

6-STRING TRINITY BANJO

Luna's banjos feature the same exquisite detailing as our other instruments. The back of the mahogany resonator makes a perfect canvas for the Celtic-inspired "Trinity" laser etched design, over a beautiful tobacco burst with faux tortoise shell binding – making these instruments truly unique.

**5-STRING BANJO**

laser etched trinity design at back of mahogany resonator  
 transparent head  
 24-piece bracket  
 plywood rim  
 TOP, BACK & SIDES: mahogany  
 NECK: mahogany  
 FINGERBOARD: rosewood  
 SCALE: 26 1/2"  
 NUT: 1 1/8"  
 FINISH: satin

**BGB CEL 5**

**6-STRING BANJO**

laser etched trinity design at back of mahogany resonator  
 transparent head  
 24-piece bracket  
 plywood rim  
 TOP, BACK & SIDES: mahogany  
 NECK: mahogany  
 FINGERBOARD: rosewood  
 SCALE: 26 1/2"  
 NUT: 1 11/16"  
 FINISH: satin

**BGB CEL 6**

*acoustic folk instruments*





TRINITY ELECTRIC BOUZOUKI



TRINITY F MANDOLIN



TRINITY A MANDOLIN

*"Don't turn away. Keep your gaze on the bandaged place. That's where the light enters you."*

Easily the most recognizable and ancient Celtic knot work design of all, it is a knot with no beginning or end... a continuum of many meanings. Like all Celtic knot work, it symbolizes the eternal cycle of life.

It has symbolized the three phases of woman (maiden, mother, crone) and of the family (mother, father, child), as well as the three planes of existence (body, mind, spirit). Since the fourth century it has represented the triplicate nature of the Christian faith (Father, Son and The Holy Spirit).

### TRINITY BOUZOUKI

trinity design at sound hole  
faux tortoise binding  
BODY: Celtic-style bouzouki  
TOP: solid spruce  
BACK & SIDES: solid maple  
NECK: maple  
FINGERBOARD: rosewood  
SCALE: 26.3"  
NUT: 1 1/8"  
FINISH: toned back satin

BGBZ EL TRI (with preamp)

### TRINITY F MANDOLIN

trinity design at sound hole  
faux tortoise binding  
BODY: F-style mandolin  
TOP: solid spruce  
BACK & SIDES: solid maple  
NECK: maple  
FINGERBOARD: rosewood  
SCALE: 14"  
NUT: 1 1/8"  
FINISH: satin tobacco burst

BGM TRI F

### TRINITY A MANDOLIN

trinity design at sound hole  
faux tortoise binding  
BODY: A-style mandolin  
TOP: solid spruce  
BACK & SIDES: solid maple  
NECK: maple  
FINGERBOARD: rosewood  
SCALE: 14"  
NUT: 1 1/8"  
FINISH: satin tobacco burst

BGM TRI A



WEISSENBORN-STYLE SOLID



WEISSENBORN-STYLE SELECT



ELECTRIC LAP STEEL

*"There is a fountain inside you. Don't walk around with an empty bucket."*

Acoustic lap-style guitars first emerged in Hawaii in the 1890s, where players raised the action of their standard guitars, laid them flat on their laps, and learned to play melodies with a metal bar sliding along the strings. Los Angeles-based luthier Hermann Weissenborn refined the concept in the 1920s. Electric lap steels were developed in response for the desire for louder volume.

Luna's Weissenborn-style **acoustic and electric lap steel** offerings feature the same distinctive abalone fret markers as our High Tide series ukuleles. A full moon at the first fret tugs at the waves that grace the rosewood fingerboards.

### WEISSENBORN-STYLE SOLID

abalone 'rising tide' fret markers  
BODY: Weissenborn-style Hawaiian  
TOP: solid mahogany  
BACK & SIDES: solid mahogany  
NECK: mahogany  
FINGERBOARD: Indian rosewood  
TUNERS: chrome-plated  
SCALE: 24.5"  
NUT: ox bone  
FINISH: satin

LS WEI SOLID

### WEISSENBORN-STYLE SELECT

abalone 'rising tide' fret markers  
BODY: Weissenborn-style Hawaiian  
TOP: select mahogany  
BACK & SIDES: select mahogany  
NECK: mahogany  
FINGERBOARD: Indian rosewood  
TUNERS: chrome-plated  
SCALE: 24.5"  
NUT: ox bone  
FINISH: gloss

LS WEI SELECT

### ELECTRIC LAP STEEL

abalone 'rising tide' fret markers  
BODY: mahogany  
NECK: mahogany  
PICKUPS: humbuckers  
BRIDGE: Tune-O-Matic  
TUNERS: chrome-plated  
SCALE: 25.5"  
NUT: 2"  
FINISH: satin

LS ELECTRIC





ATHENA AQUA

*"Your task is not to seek for love, but merely to seek and find all the barriers within yourself that you have built against it."*

**ATHENA SERIES**  
**ATHENA AQUA**

Lightweight and versatile, Luna's Athena hollow body electric guitars are the perfect instruments to be named for the goddess of musicians.

Available in 501 Natural and 501 Red as well as Deco Black, Vintage Aqua, and Deco White, the Athenas are sized for comfort and crafted for superb sound and play. The Deco Black 12 string is the lightest, most comfortable in the industry. A mini humbucking pickup delivers full-bodied tones and Luna's trademark slim neck profile puts every chord and note within easy reach. A great choice for the sophisticated player.

- set neck
- pearl Art Deco fret inlays
- chrome hardware
- BODY: maple
- NECK: mahogany
- FRETBOARD: rosewood
- TUNERS: die cast covered
- PICKUPS: mini humbuckers
- BRIDGE: Tune-O-Matic
- SCALE: 24 3/4"
- NUT SIZE: 1 5/8"
- FINISH: aqua gloss

**ATH HBG AQA**





ATHENA WHITE



ATHENA BLACK



ATHENA AQUA



ATHENA 12



ATHENA 501 NATURAL



ATHENA 501 RED

*"Everyone has been made for some particular work, and the desire for that work has been put in every heart."*

*"We can't help being thirsty, moving toward the voice of water."*

**ATHENA WHITE**

**ATHENA BLACK**

**ATHENA AQUA**

**ATHENA 12**

**ATHENA 501**

Lightweight and versatile, Luna's **Athena** hollow body electric guitars are the perfect instruments to be named for the goddess of musicians. Coax a wide and usable variety of classic, warm electric tones from the mini humbuckers.

set neck  
pearl Art Deco fret inlays  
gold hardware  
BODY: maple  
NECK: mahogany  
FRETBOARD: rosewood  
TUNERS: die cast covered  
PICKUPS: mini humbuckers  
BRIDGE: Tune-O-Matic  
SCALE: 24 3/4"  
NUT SIZE: 1 5/8"  
FINISH: white gloss

**ATH HBG WHT**

set neck  
pearl Art Deco fret inlays  
chrome hardware  
BODY: maple  
NECK: mahogany  
FRETBOARD: rosewood  
TUNERS: die cast covered  
PICKUPS: mini humbuckers  
BRIDGE: Tune-O-Matic  
SCALE: 24 3/4"  
NUT SIZE: 1 5/8"  
FINISH: black gloss

**ATH HBG BLK**

set neck  
pearl Art Deco fret inlays  
chrome hardware  
BODY: maple  
NECK: mahogany  
FRETBOARD: rosewood  
TUNERS: die cast covered  
PICKUPS: mini humbuckers  
BRIDGE: Tune-O-Matic  
SCALE: 24 3/4"  
NUT SIZE: 1 5/8"  
FINISH: aqua gloss

**ATH HBG AQA**

set neck  
pearl Art Deco fret inlays  
chrome hardware  
BODY: maple  
NECK: mahogany  
FRETBOARD: rosewood  
TUNERS: die cast covered  
PICKUPS: mini humbuckers  
BRIDGE: Tune-O-Matic  
SCALE: 24 3/4"  
NUT SIZE: 1 13/16"  
FINISH: black gloss

**ATH HBG 12 BLK**

**Athena 501** is the big sister to our regular Athena. This semi-hollow classic features warm sound, easy playability, good sustain and resistance to feedback. Athena 501 offers the versatility of going between rock, blues, jazz and more on the same guitar. Independent volume and tone controls await your personal settings... switch from articulate, searing leads to hauntingly dark chords at will with a flip of the almighty pickup selector.

C-style bolt-on neck  
gold satin hardware  
flame maple top  
BODY: maple  
NECK: mahogany  
FRETBOARD: rosewood  
TUNERS: die cast covered  
PICKUPS: humbuckers  
BRIDGE: Tune-O-Matic  
SCALE: 24 3/4"  
NUT SIZE: 1 5/8"  
FINISH: clear gloss (natural), trans red (red)

**ATH 501 NAT ATH 501 RED**





ATHENA HYBRID  
TOBACCO BURST FLAME



ATHENA HYBRID  
QUILTED ASH

**ATHENA SERIES**  
**ATHENA HYBRID**

**BODY:** mahogany  
**NECK:** mahogany "U" bolt-on  
**FRETBOARD:** rosewood  
**TUNERS:** chrome  
**PICKUPS:** humbuckers, piezo  
**BRIDGE:** acoustic  
**SCALE:** 24 3/4"  
**NUT SIZE:** 1 5/8"  
**FINISH:** gloss over tobacco burst flame maple

**ATH HYB TBFM**  
**ATH HYB QA**

Hybrids are mythological creatures combining more than one species. Luna's **Athena Hybrid** combines the best playability, feels and sounds of acoustic and electric instruments into one - offering players a wide and rich palette that is more than the sum of its parts. Like your own personal Excalibur, this is a worthy instrument that you can take into any gig and know you're ready for anything... rock, jazz, folk, country, rockabilly... pretty much whatever you or your audience are in the mood for. As a recording tool, or just for your own enjoyment and amusement, it will cover all the bases. Sleek and responsive, it's inspiring to touch – and is also a visual stunner.

*"Maybe you are searching among the branches for what only appears in the roots"*



APOLLO PEACE



APOLLO TATTOO



APOLLO PARADISE

**APOLLO SERIES**

The **Apollo Tattoo** takes its bold design from traditional Polynesian body ornamentation. Those designs were monochromatic, tattooed in black against brown skin with strongly geometric patterns and shapes and symbols inspired by the natural island world. This instrument is tattooed on mahogany by laser etching.

The **Apollo Paradise** is based on the art of Medieval Spain. The culturally rich and diverse period is the only one in which Henna was grown and used as a cosmetic in Europe. The era also was historically important in development and growing popularity of the guitar.

The **Apollo Peace** is a very special one for us here at Luna, as it embodies a philosophy that we hold dear. A laser-cut peace sign at the selector switch is surrounded by the word 'peace' in different languages, forming a graceful continuum across the body.

etched Paradise design by Alex Morgan  
**BODY:** mahogany  
**NECK:** mahogany "U" bolt-on  
**FRETBOARD:** rosewood  
**TUNERS:** black  
**PICKUPS:** humbuckers  
**BRIDGE:** Tune-O-Matic  
**SCALE:** 24 3/4"  
**NUT SIZE:** 1 5/8"  
**FINISH:** satin

**APL PAR**  
**APL TAT**  
**APL PCE**



"The one that has a good friend needs no mirror"

Companions to Luna's Apollo Tattoo, Peace and Henna electric guitars, these **Tattoo basses** combine quality, style and affordability... aimed at cost conscious musicians of any age. The tattoo design is laser etched with an open pore finish, so the player can "feel" the design.

Whether you're more comfortable with our long or short scale version, you'll enjoy the stable feel and satisfying response of either model's comfortable action. You'll be enveloped in deep, fundamental bass tone, whether fat and unadorned (with the tone control at zero) or mixed with the perfect treble component (with the tone control at maximum, or anywhere in between).

### TATTOO ELECTRIC BASS - LONG SCALE

Laser etched tattoo art by Alex Morgan  
**BODY:** mahogany  
**NECK:** mahogany  
**FRETBOARD:** rosewood  
**TUNERS:** die cast covered  
**PICKUPS:** vintage P-bass style  
**BRIDGE:** vintage style  
**SCALE:** 34"  
**NUT WIDTH:** 1 5/8"  
**FINISH:** open pore

**BASS TAT 34**

### TATTOO ELECTRIC BASS - SHORT SCALE

Laser etched tattoo art by Alex Morgan  
**BODY:** mahogany  
**NECK:** mahogany  
**FRETBOARD:** rosewood  
**TUNERS:** die cast covered  
**PICKUPS:** vintage P-bass style  
**BRIDGE:** vintage style  
**SCALE:** 30"  
**NUT WIDTH:** 1 5/8"  
**FINISH:** open pore

**BASS TAT 30**



### TATTOO CEDAR BASS

The long scale **Tattoo Cedar bass** is inspired by traditional Polynesian tattoo body ornamentation. These designs were monochromatic – tattooed in black against brown skin, with strongly geometric patterns and shapes and symbols inspired by the natural island world.

This instrument is tattooed by laser etching against a select cedar top, offering a warm look with equally warm tones.

Laser art by Alex Morgan  
**BODY:** Grand Auditorium  
**TOP:** Select Cedar  
**NECK:** Mahogany  
**FRETBOARD:** Rosewood  
**PREAMP:** B-Band  
**SCALE:** 34"  
**NUT WIDTH:** 1 5/8"  
**FINISH:** Matte

**LAB 34 TAT CDR**



### TRIBAL BASS

The short scale **Tribal bass** is inspired by contemporary tribal tattoo design – a bold visual statement of individuality distilled from a variety of traditional tribal motifs.

We all have an undeniable need to belong...the most basic tribal need... and the reason for the tribal tattoo's renewed power in contemporary culture. Renew your creative inspiration, and give voice to your own unique expression, with this comfortable, easy to play short scale bass.

Laser art by Alex Morgan  
**BODY:** Folk  
**TOP:** Select Spruce  
**NECK:** Mahogany  
**FRETBOARD:** Rosewood  
**PREAMP:** Luna  
**SCALE:** 30"  
**NUT WIDTH:** 1 5/8"  
**FINISH:** Matte

**LAB 30 TRIBAL**



Take your show on the road in style with Luna's vintage suitcase-look **guitar & uke amps!**

Vintage Tolex and a leather handle are authentic touches, crowned by vintage Hawaiian or world travel stickers that you can place yourself. Guitar strap holders allow you to strap on the amp, plug in your guitar, and play untethered and unleashed! The amp opens for easy battery changes, storage of the included AC adapter, and even has a compartment with Velcro lid to house your keys, cell phone, wallet or a small snack!

But wait... there's more! After your performance, just plug your iPhone or MP3 player into the 1/8" mini jack for mood music. It's an instant "party in a box"!



### SUITCASE AMPS

- 5-WATT PORTABLE AMP
- INCLUDES 9-VOLT BATTERY & AC ADAPTER
- 1/4" INPUT
- CD /MP3 INPUT
- 1/8" HEADPHONE OUT
- VOLUME & TONE CONTROL
- VINTAGE TWEED TOLEX
- VINTAGE TRAVEL STICKERS (guitar amp)
- VINTAGE HAWAIIAN STICKERS (uke amp)
- LEATHER HANDLE
- STRAP BUTTONS
- INSIDE STORAGE

**AG5** (GUITAR)    **UKE SA 5** (UKE)

### ACOUSTIC AMBIENCE AMPLIFIERS

These little jewels pack a lot of personality and sound for their size! Both are covered in a 'tooled leather' look Tolex, accented by brass hardware.

The 15 watt is a perfect practice amp and appropriate for a small cafe setting. The 25 watt is also a great practice amp, while offering more flexibility for any intimate venue performance.



#### 25 WATT

- 25 WATTS
- 8" SPEAKER
- 2.5" TWEETER
- CHORUS W/ SPEED CONTROL
- CHANNEL ONE: volume
- CHANNEL TWO: bass, mid, treble
- CD INPUT w/separate volume
- HEADPHONE JACK

**AA 25**

#### 15 WATT

- 15 WATTS
- 6.5" SPEAKER
- CHORUS W/ SPEED CONTROL
- VOLUME
- BASS
- MID
- TREBLE

**AA 15**



*"Tear off the mask...your face is glorious!"*

### ACOUSTIC HARDSHELL CASES

Our acoustic hardshell case features a handsome tooled leather look with distressed brass hardware and a black crushed velvet interior. Dreadnought or Grand Concert profiles.

**HS DG**



ACOUSTIC HARDSHELL



SAFARI TRAVEL BAG  
(PADDED GIG BAG)



ACOUSTIC SOFTSHELL

UKE SOFTSHELL

ELECTRIC SOFTSHELL

### SAFARI TRAVEL BAG

When you're ready to take your Safari travel guitar on safari, these gig bags in stylish khaki offer extra padding with a large front pocket, embroidered Luna logo, distressed brass zipper pulls and a comfortable shoulder pad.

**GB SAF**

### LIGHTWEIGHT CASES

Luna's soft cases feature lightweight, durable construction and polystyrene core cushioning with 5mm outer foam padding. Designed to offer excellent protection for your instrument, these cases are made of water-resistant black fabric with the Luna Guitars logo embroidered in white under a net pocket. Black velvet interior. Two-way zip closure with zip hanger and detachable shoulder strap.

- LL 5** (Small Athenas & Apollo electrics)
- LL FP** (folk, parlor)
- LL DG** (dreadnought, grand concert)
- LL SOPRANO** (uke)
- LL CONCERT** (uke)
- LL TENOR** (uke)





## JOIN THE TRIBE

4924 West Waters Avenue | Tampa, FL 33634  
1.800.793.5273 | [www.lunaguitars.com](http://www.lunaguitars.com)

Speak the  
truth, even if  
your voice  
shakes



*thanks to our "free range" models who,  
like our players, come from all walks of life*